



# SUBMITTAL COVER SHEET

PROJECT NAME \_\_\_\_\_  
 LOCATION \_\_\_\_\_  
 ARCHITECT \_\_\_\_\_  
 ENGINEER \_\_\_\_\_  
 CONTRACTOR \_\_\_\_\_  
 SUBMITTED BY \_\_\_\_\_ DATE \_\_\_\_\_

## UNIT SUMMARY

Quantity						
Unit Designation						
Model No.						
Total Cooling						
Sensible Cooling						
Air Ent. Evaporator						
Air Lvg. Evaporator						
Heating Input						
Heating Output						
CFM/ESP						
EER/SEER						
Electrical						
Minimum Ampacity						
Min.-Max. Breaker						
Net Unit Weight						
Accessory						
Catalog Form Number						

**ACCESSORIES:**

**NOTES:**

# SUBMITTAL SHEET FOR RGRM 95% A.F.U.E. WITH *DUAL COMFORT CONTROL*™ TWO-STAGE UPFLOW GAS FURNACES



\*Visit [www.Rheem.com](http://www.Rheem.com) for complete details.\*

**Models with Input Rates of 45,000, 60,000, 75,000, 90,000, 105,000 & 120,000 BTU/HR [13.19, 17.58, 22, 26.38, 30.77 & 35.17 kW]**

JOB NAME \_\_\_\_\_ MODEL NO. \_\_\_\_\_  
 CONTRACTOR \_\_\_\_\_ OUTDOOR UNIT MODEL NO. \_\_\_\_\_  
 ENGINEER \_\_\_\_\_ LOCATION \_\_\_\_\_  
 SUBMITTED FOR  APPROVAL  RECORD ORDER NO. \_\_\_\_\_  
 DATE \_\_\_\_\_

## UNIT DATA

### HEATING PERFORMANCE

TOTAL CAPACITY INPUT\* ..... MBH [kW]  
 TOTAL CAPACITY OUTPUT\* .. MBH [kW]  
 DESIGN TEMP. RISE ..... °F [°C] DB  
 AFUE ..... %  
 CALIFORNIA SEASONAL EFFICIENCY ..... %  
(\*uses blower motor heat)

### SUPPLY AIR BLOWER PERFORMANCE

TOTAL AIR SUPPLY ..... CFM [L/s]  
 TOTAL RESISTANCE EXTERNAL TO UNIT ..... IWG  
 BLOWER SPEED ..... RPM  
 POWER OUTPUT REQUIREMENT .. BHP  
 MOTOR RATING ..... HP [W]  
 POWER INPUT REQUIREMENT ..... kW

### ELECTRICAL DATA

POWER SUPPLY ..... Hz  
 TOTAL UNIT AMPACITY..... AMPS  
 MINIMUM WIRE SIZE ..... AWG  
 MAXIMUM OVERCURRENT DEVICE FUSES/HACR BREAKER ..... AMPS

## FEATURES FOR RGRM-

- Two stages of operation to save energy and maintain optimal comfort level.
- Furnace operates at 70% capacity for low-heat and 100% capacity for high-heat.
- Compatible with single or two-stage thermostat. (For optimal performance a two-stage thermostat is recommended.)
- Heat exchanger is constructed of all stainless steel for maximum corrosion resistance and thermal fatigue reliability.
- Low profile "34 inch" design is lighter and easier to handle and leaves room for optional accessories.
- Left or right side gas, electric, and condensate drainage connections.
- Integrated control board manages all operational functions and provides hookups for humidifier and electronic air cleaner.
- An insulated blower compartment, a slow-opening gas valve and a specially designed inducer system make it one of the quietest furnaces on the market today.
- Variable speed blower motor technology provides ultimate humidity control, quieter sound levels and year-round energy savings.
- Optional indoor or outdoor combustion air. In addition, combustion air may be piped to either the top or side of the cabinet on all upflow models. A special molded fitting is provided to ease installation.
- Control fuse protection.
- Solid bottom is standard.
- Control board diagnostics.

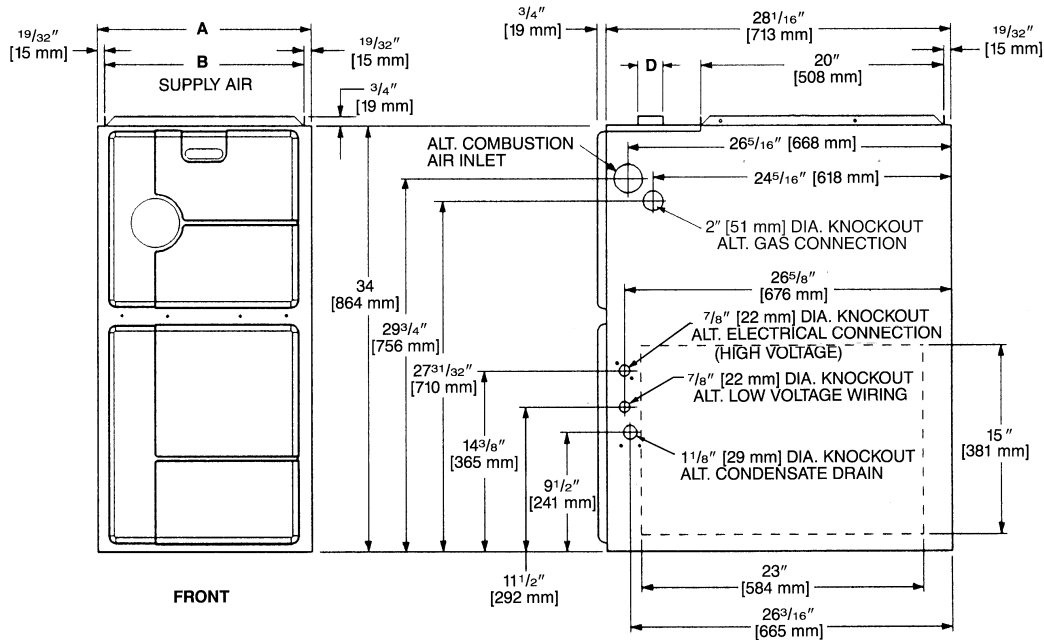
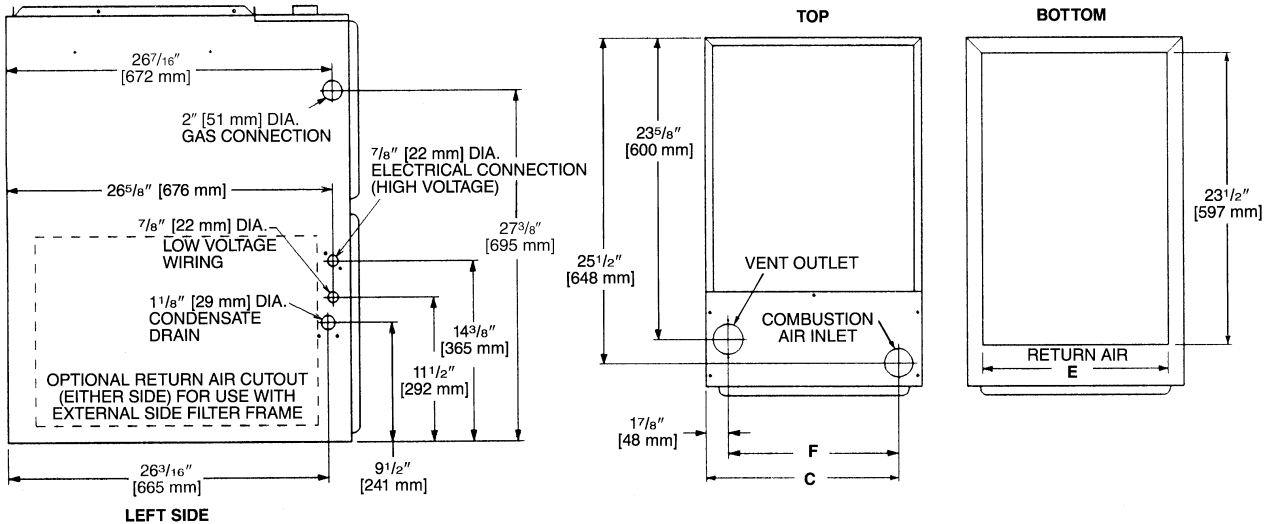
## FIELD INSTALLED ACCESSORIES

- Plenum Adapter (RXAA-) .....
- Vent Termination Kits Concentric:
- Vertical/Horizontal: RXGY-E03A .....
  - Horizontal Two Pipe: RXGY-D02, RXGY-D03, BXGY-D04 .....
- Condensate Pump Kit: RXGY-B01 .....
- Neutralizer Kit: RXGY-A01 .....
- Fossil Fuel Kit: RXPf-F01 and F02 .....
- Return Air Plenum (RXGR-C17B, 21B, 24B) .....
- External Bottom Filter Rack: RXGF-CB .....
- External Side Filter Rack: RXGF-CA (Side) RXGF-CB (Bottom) .....
- High Altitude Kit: (RXGY-F18, F20, F21).....



*"Proper sizing and installation of equipment is critical to achieve optimal performance. Split system air conditioners and heat pumps must be matched with appropriate coil components to meet ENERGY STAR criteria. Ask your Contractor for details or visit [www.energystar.gov](http://www.energystar.gov)."*

# UPFLOW MODELS



MODEL RGRM-	A	B	C	D	E	F	LEFT SIDE	MINIMUM CLEARANCE (IN.) [mm]				
								RIGHT SIDE	BACK	TOP	FRONT	VENT
04*M	17.5 [445]	16 <sup>1</sup> / <sub>32</sub> [415]	15 <sup>5</sup> / <sub>8</sub> [397]	2 [51]	15 [422]	13 <sup>25</sup> / <sub>32</sub> [352]	0	0	0	1 [25]	2 [51]	0
06*M	17.5 [445]	16 <sup>1</sup> / <sub>32</sub> [415]	15 <sup>5</sup> / <sub>8</sub> [397]	2 [51]	15 [422]	13 <sup>25</sup> / <sub>32</sub> [352]	0	0	0	1 [25]	2 [51]	0
07*M	17.5 [445]	16 <sup>1</sup> / <sub>32</sub> [415]	15 <sup>5</sup> / <sub>8</sub> [397]	2 [51]	15 [422]	13 <sup>25</sup> / <sub>32</sub> [352]	0	0	0	1 [25]	2 [51]	0
07*Y	21 [533]	19 <sup>27</sup> / <sub>32</sub> [504]	19 <sup>1</sup> / <sub>8</sub> [487]	2 [51]	18 <sup>1</sup> / <sub>2</sub> [511]	17 <sup>9</sup> / <sub>32</sub> [441]	0	0	0	1 [25]	2 [51]	0
09*Z	21 [533]	19 <sup>27</sup> / <sub>32</sub> [504]	19 <sup>1</sup> / <sub>8</sub> [487]	2 [51]	18 <sup>1</sup> / <sub>2</sub> [511]	17 <sup>9</sup> / <sub>32</sub> [441]	0	0	0	1 [25]	2 [51]	0
10*Z	21 [533]	19 <sup>27</sup> / <sub>32</sub> [504]	19 <sup>1</sup> / <sub>8</sub> [487]	2 [51]	18 <sup>1</sup> / <sub>2</sub> [511]	17 <sup>9</sup> / <sub>32</sub> [441]	0	0	0	1 [25]	2 [51]	0
12*R	24.5 [622]	23 <sup>1</sup> / <sub>32</sub> [593]	22 <sup>5</sup> / <sub>8</sub> [575]	2 [51]	22 [600]	20 <sup>25</sup> / <sub>32</sub> [530]	0	0	0	1 [25]	2 [51]	0

\*E=Standard  
\*N=NO<sub>x</sub> Models

[ ] Designates Metric Conversions

Before proceeding with installation, refer to installation instructions packaged with each model, as well as complying with all Federal, State, Provincial, and Local codes, regulations, and practices.

Rheem Sales Company, Inc.  
P.O. Box 17010, Fort Smith, AR 72917

"In keeping with its policy of continuous progress and product improvement, Rheem reserves the right to make changes without notice."